

STUDENT SATISFACTION SURVEY 2018-2019

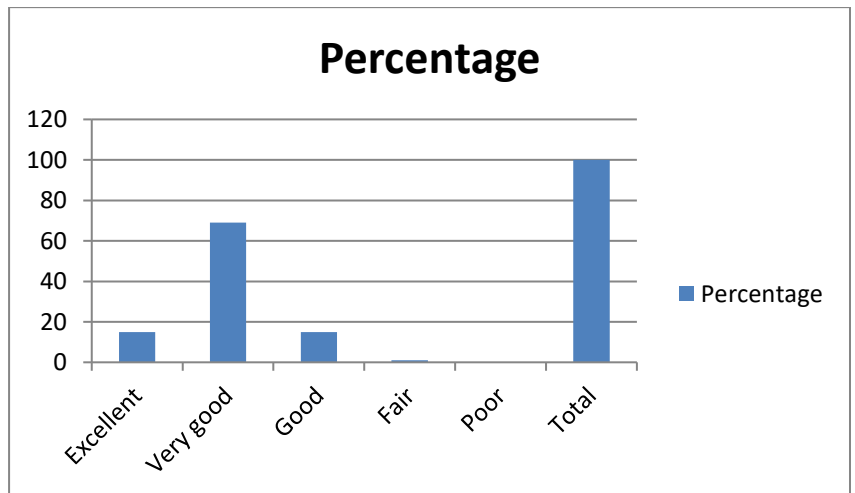
The student satisfaction survey is one route to the identification of areas of concern with the college. To measure student satisfaction with significant components of the educational and service quality, the college uses an effective questionnaire based survey (to collect information). The questionnaire focuses both on teaching- learning experience and the total student experience. The parameters incorporated into the student satisfaction survey include the quality of the teaching faculty as well as access to the faculty which manifest the learning experience in the institution. Questions regarding infrastructure are essentially linked to classroom, laboratory and library facilities. To promote the multifaceted development of students, the opportunities provided for extracurricular activities, fitness and recreation, participation in clubs and organizations etc. are assessed in the student satisfaction survey.

The student satisfaction survey questionnaire is given to students every year. For each main topic, students are asked to indicate satisfaction ratings on a five- point scale. The questions used in the survey are meant not only to elicit perceptions but also to collect data with respect to expectations. The questionnaire is designed to be completed within about ten minutes. The outcomes are considered seriously and are integrated into management decision making. Those aspects that fall into the category of high importance and low satisfaction are priority areas of management intervention. The survey is designed to supplement the current arrangement for feedback from students on their course experiences and their general satisfaction with services and facilities.

As part of student satisfaction survey, from among 1109 students, a sample of 600 students were taken by using convenience sampling method. For analyzing the data, tools like percentage analysis, charts, graphs etc. are used.

1. Overall Satisfaction Level of Educational experience

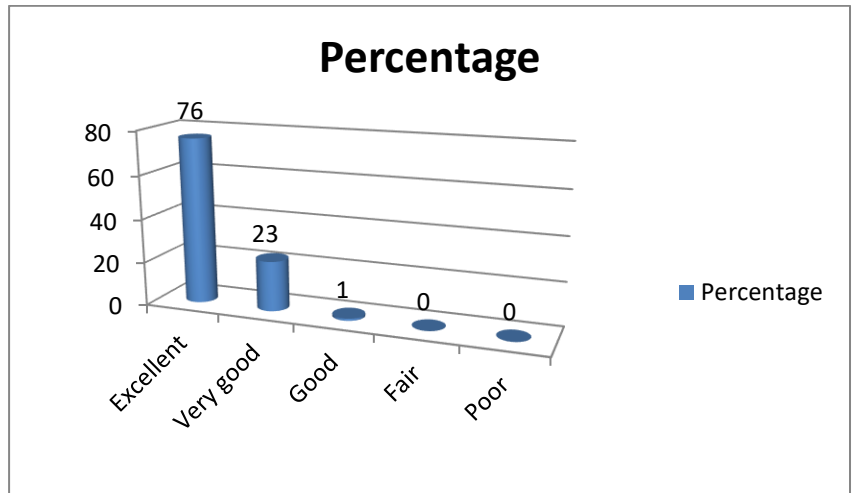
Particulars	No. of students	Percentage
Excellent	88	15
Very good	412	69
Good	90	15
Fair	10	1
.Poor	-	-
Total	600	100



2. Various aspects of Educational Experience

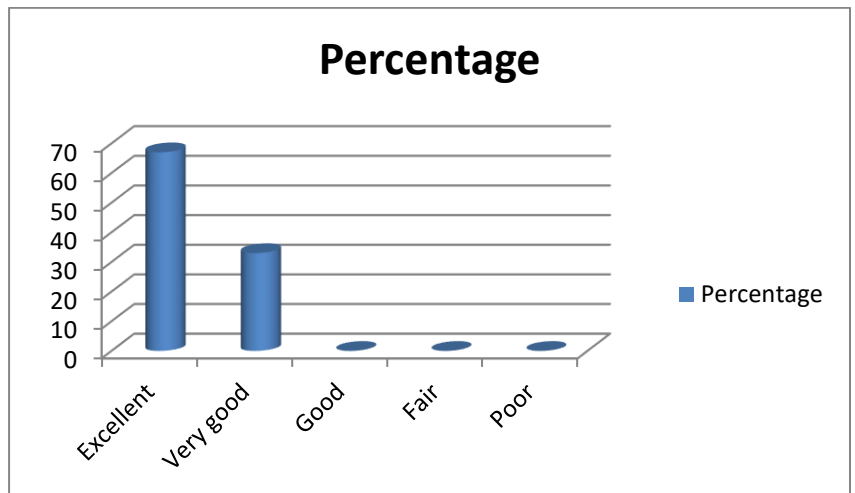
2.1 Quality of Teaching Faculty

Particulars	No. of students	Percentage
Excellent	455	76
Very good	140	23
Good	05	1
Fair	-	-
Poor	-	-
Total	600	100



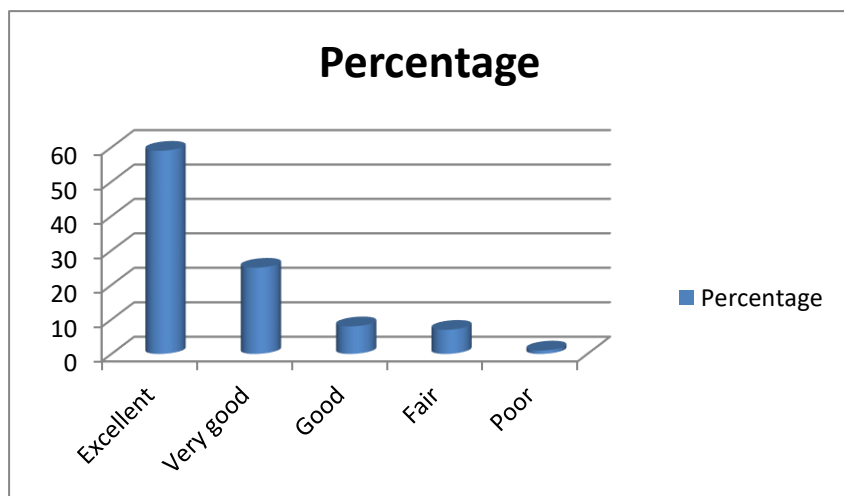
2.2 Access to Teaching Faculty

Particulars	No. of students	Percentage
Excellent	402	67
Very good	198	33
Good	-	-
Fair	-	-
Poor	-	-
Total	600	100



2.2 Fellow Students Academic Ability

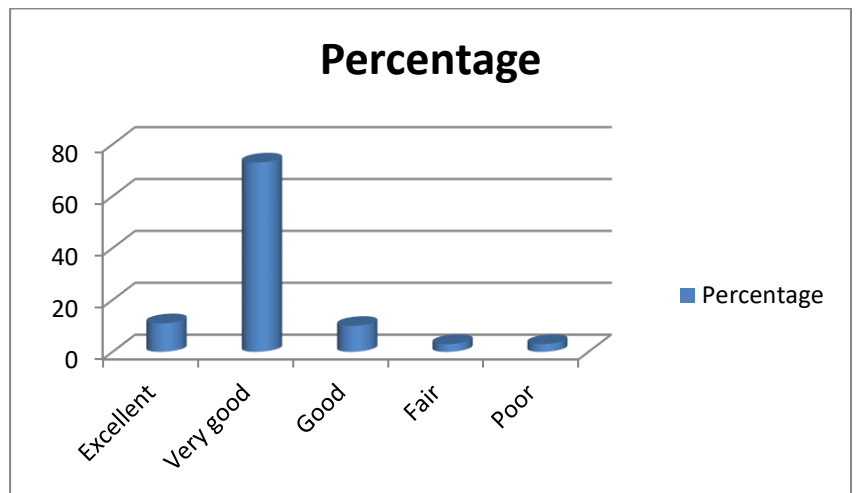
Particulars	No. of students	Percentage
Excellent	355	59
Very good	150	25
Good	50	8
Fair	40	7
Poor	05	1
Total	600	100



3. Services/Facilities at the Institution

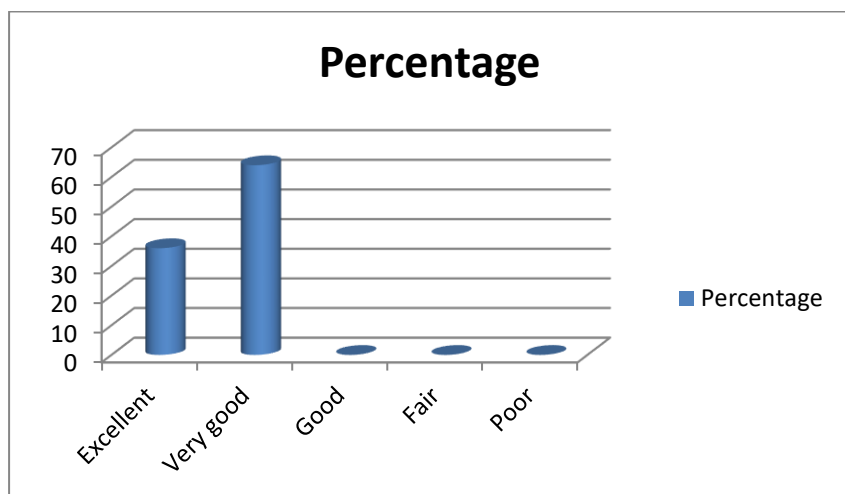
3.1 Campus

Particulars	No. of students	Percentage
Excellent	64	11
Very good	436	73
Good	60	10
Fair	20	3
Poor	20	3
Total	600	100



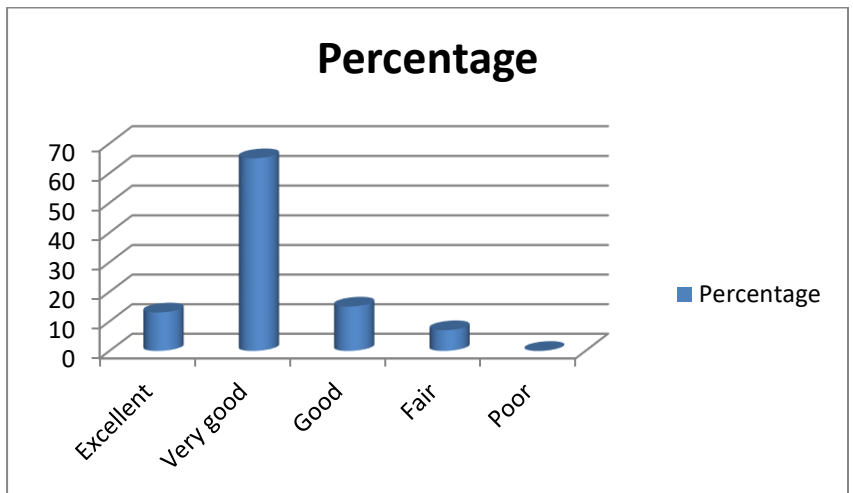
3.2 Class and Laboratory facilities

Particulars	No. of students	Percentage
Excellent	215	36
Very good	385	64
Good	-	-
Fair	-	-
Poor	-	-
Total	600	100



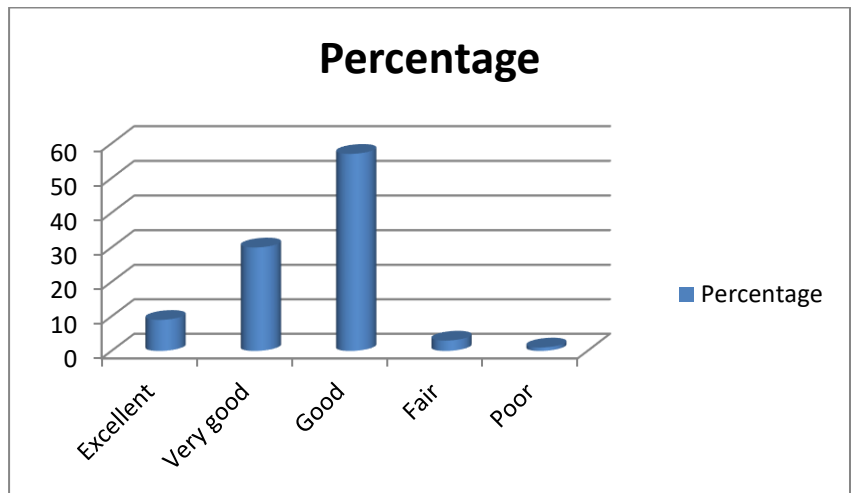
3.3. Library

Particulars	No. of students	Percentage
Excellent	80	13
Very good	388	65
Good	90	15
Fair	42	7
Poor	-	-
Total	600	100



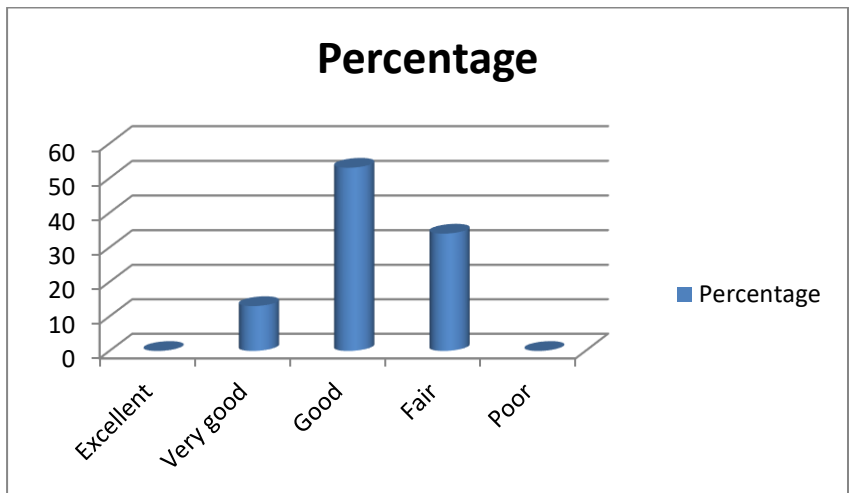
3.4. Canteen facilities

Particulars	No. of students	Percentage
Excellent	55	9
Very good	180	30
Good	340	57
Fair	18	3
Poor	7	1
Total	600	100



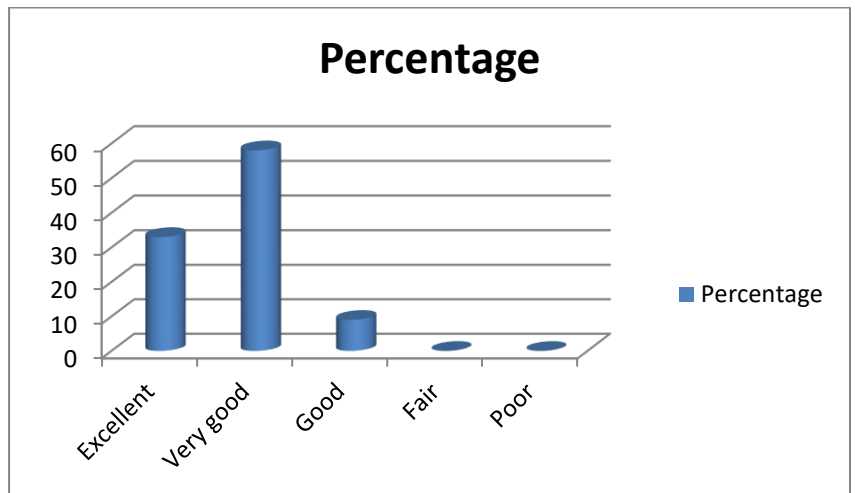
3.5 Parking

Particulars	No. of students	Percentage
Excellent	-	-
Very good	80	13
Good	317	53
Fair	203	34
Poor	-	-
Total	600	100



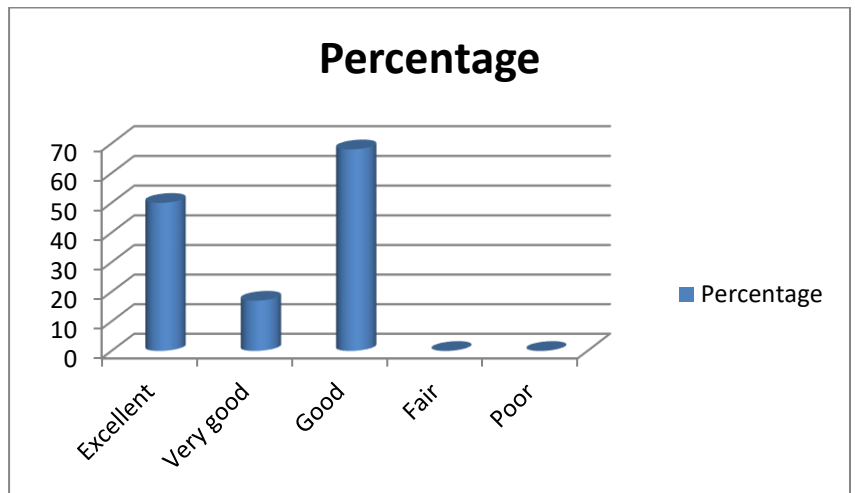
3.6 Sports and Fitness facilities

Particulars	No. of students	Percentage
Excellent	200	33
Very good	350	58
Good	50	9
Fair	-	-
Poor	-	-
Total	600	100



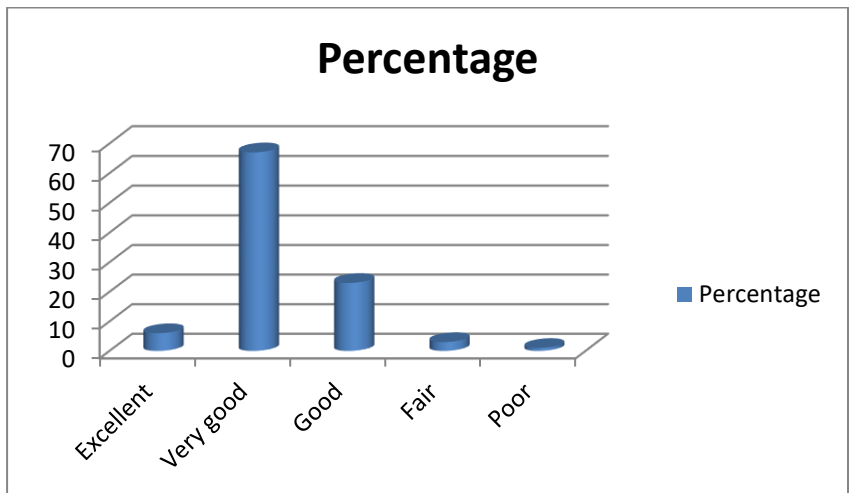
3.7 Career Counseling and Placement

Particulars	No. of students	Percentage
Excellent	89	50
Very good	100	17
Good	411	68
Fair	-	-
Poor	-	-
Total	600	100



3.8 Reprographic facilities

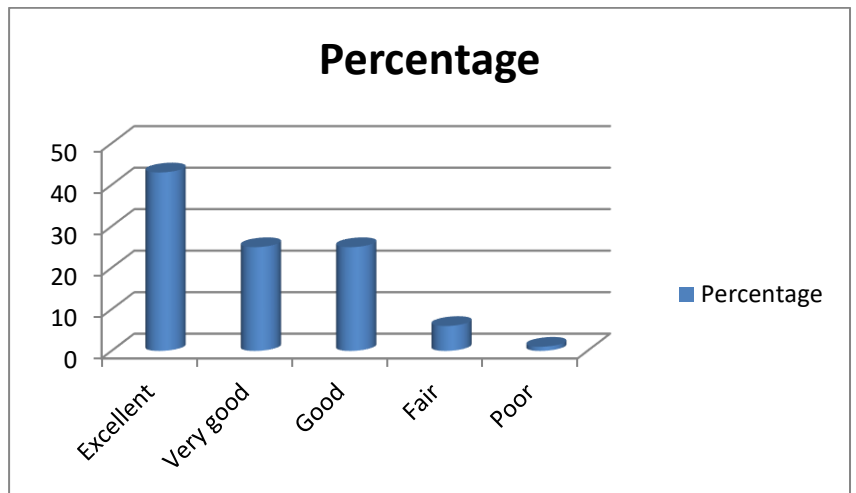
Particulars	No. of students	Percentage
Excellent	33	6
Very good	400	67
Good	142	23
Fair	18	3
Poor	7	1
Total	600	100



4. Various aspects relating to Student Life at the Institution

4.1 Sports and Recreational facilities

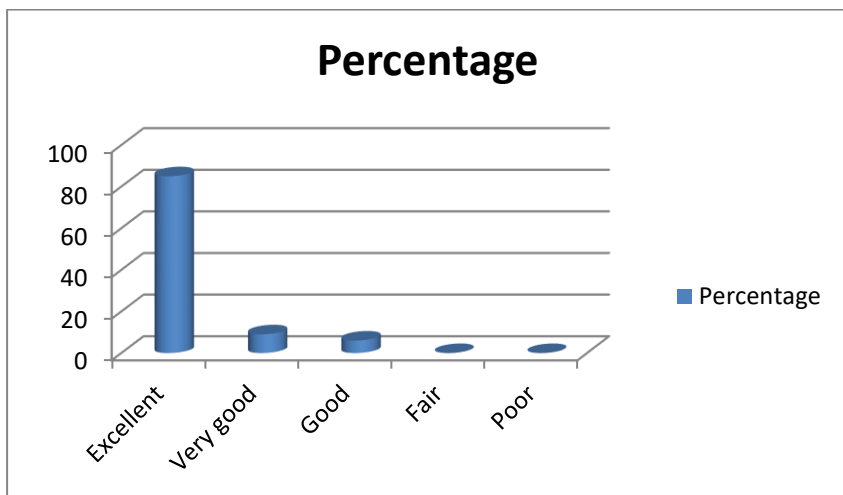
Particulars	No. of students	Percentage
Excellent	258	43
Very good	150	25
Good	150	25
Fair	37	6
Poor	5	1
Total	600	100



4.2 Clubs and Student Organizations

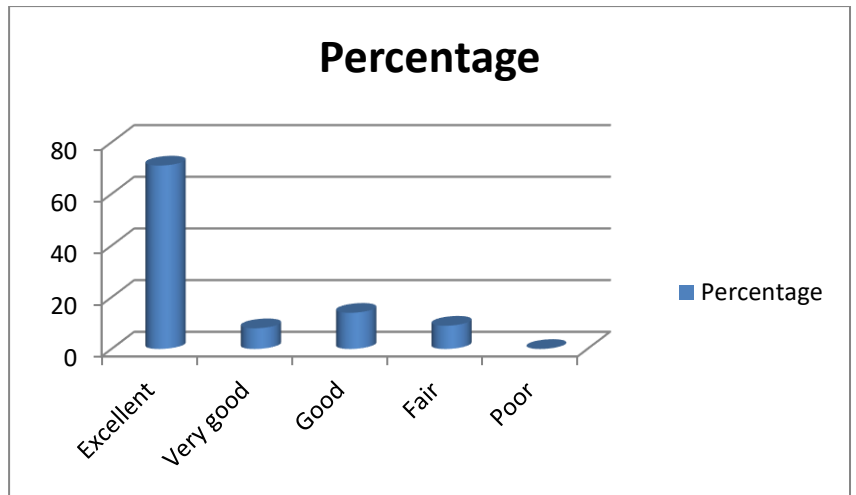
Particulars	No. of students	Percentage
Excellent	512	85
Very good	58	9
Good	30	6
Fair	-	-
Poor	-	-

Total	600	100
-------	-----	-----



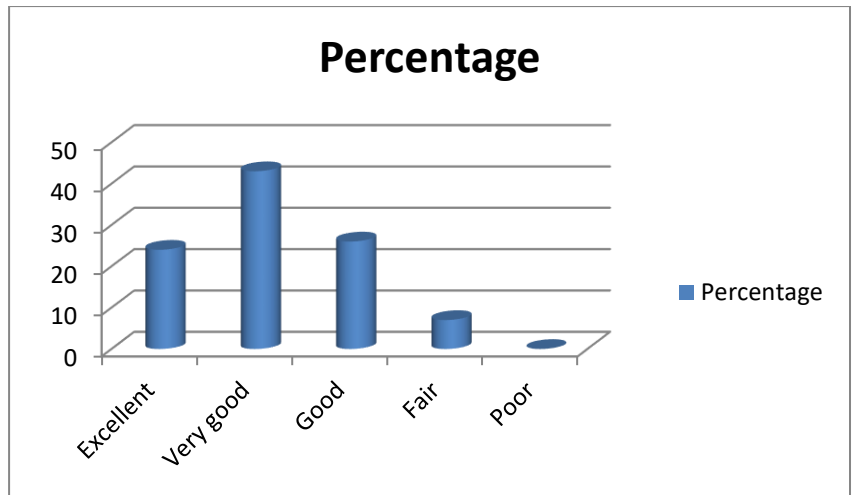
4.3 Campus Safety

Particulars	No. of students	Percentage
Excellent	427	71
Very good	45	8
Good	85	14
Fair	43	9
Poor	-	-
Total	600	100



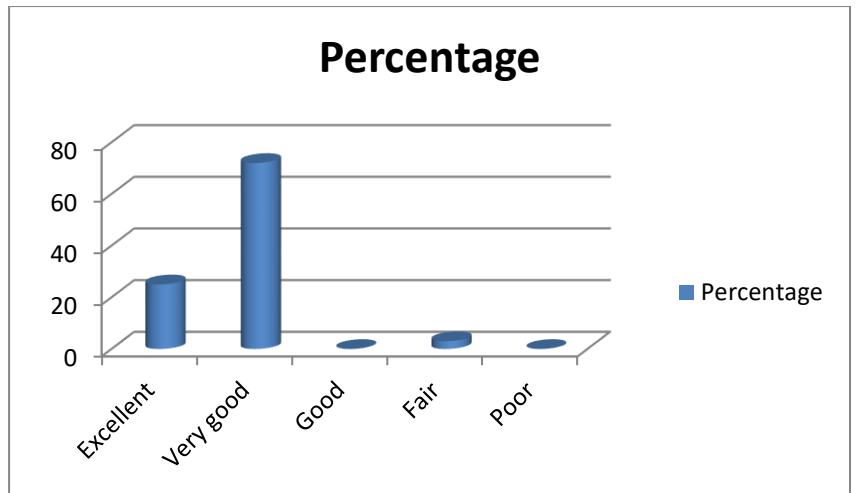
4.4 Social Life

Particulars	No. of students	Percentage
Excellent	145	24
Very good	258	43
Good	155	26
Fair	42	7
Poor	-	-
Total	600	100



4.5 Extracurricular Activities

Particulars	No. of students	Percentage
Excellent	149	25
Very good	436	72
Good	-	-
Fair	15	3
Poor	-	-
Total	600	100



Findings of the survey

- Majority of the students(i.e. 69%) are of opinion that, the overall satisfaction level of educational experience as very good.
- Regarding the various aspects of educational experience, majority of the students reveals that the quality and access to teaching faculty, fellow student academic ability are excellent but only 1 % students have an opinion that the academic ability of fellow students is poor.

Services/ facilities at the institution

- Majority of the students have an opinion that the campus and its surroundings are very good
- 64 % of the students opined that class and laboratory facilities are very good, 36% reveals that it was excellent.
- Majority of the students i.e. 65% reveals that the library of the college is very good and 13% considers it as excellent. Only 7 % have an opinion that the library and its operations are fair.
- 57 % of the students reveals that the canteen and its services are good and only 7 % have an opinion that the services provided by the canteen are poor.
- Majority of the students have opined that the parking facilities in the college are good but 34% considered them as fair.
- 58% of the students reveals that sports and fitness facilities are excellent.
- Majority of the students' i.e. 68% have an opinion that the career counseling and placement provided by the college is good.

Various aspects of student life at the Institution.

- Majority of the students reveal that the sports and recreational facilities and club and student organization are excellent and regarding campus safety 71% reveals that the safety measures are excellent but 2 % opinioned that it is poor.
- Regarding social life of students in the institution, 43 % have an opinion that it is very good.
- 75 % reveals that the extracurricular activities provided in the institution are very good.
- 67% of the students have an opinion that the reprographic facility provided in the institution is very good. But 7 % reveals that it is poor.

Suggestions

- Provide free Wi-Fi facilities in the campus
- Provide computerized renew and reservation system in the library.
- Provide roofed shed for four wheeler parking.
- More reprographic facilities should be provided in the college.

- Provide high quality and different varieties of food items in the canteen.
- Make the store full time available for the students.